

SUPERIOR BEE SUPPLY LLC

Top Bar Beehive Kit Assembly Instructions.

Thank you for choosing Superior Bee Supply, were all hives are individually hand made.
Being handmade there are inherently minor differences in each one, making each one unique.

HIVE BODY ASSEMBLY



picture #1



picture # 2



picture # 3

Place bottom board on strong large flat surface.

Be sure to place countersunk screw holes face down.

Place each hive end at the ends of bottom board. See Picture # 4

Place bottom board on top of attached bottom guide lug.

Be sure to align both sides of bottom with lug and

be sure bottom board is pushed fully against the hive ends.

Place wood glue on top of guide lug and on hive end

at the point where the end of the bottom board makes contact with the hive end.

Only after assuring that all parts are aligned, secure the bottom board to both hive ends

using the 1.75 screws through the 3 holes in the bottom of the hive ends.



picture # 4

***Be sure to insert screw straight.**

Be sure screw does not break out the side of the board.

After securing the hive bottom to both of the hive ends, slide one of the hive side boards between the hive ends so that it comes to rest on the side wall guide lugs and bottom board as shown in picture

***Be sure the top edge of hive side is flat as shown in pictures 6 and 7 and that the bottom edge is flat against the hive bottom.**

*** Note-If you have an observation window be sure to place it on next to the front entrance board.**

If you want the window on the side near you when you open to roof, you will need to figure out what side your roof will hinge.

If you want a right side entrance, place entrance board to your right when installing the window. If you want a left side entrance reverse the hive body.

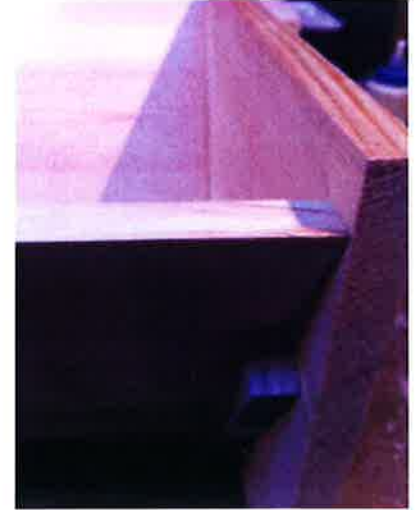
Be very sure to put the smooth side of the window opening out as seen in picture #9..

The window pane will lay in the recess around the window opening on the inside of the hive body side board.

Push hive side board all the way to the bottom board and all the way to the inside of the hive side board guide lugs. (Place wood glue on guide lug and hive end where the hive side board makes contact.)



picture 5



picture 6

Now secure hive side board to hive end board using the 1.75 screws through the 8 screw holes in hive end board.

***Be sure to insert screw straight.**

Go slow and ensure the screw does not break out of the side board!

Now turn hive over on it's top, and secure the hive bottom board to the hive side boards using the 1.25 screws in the 14 screw holes.

*** Be sure not to over tighten screws. This may cause the bottom board to split just snug up the screws.**

The slot in the rail is where the stickyboard slides in.

With hive still upside down, place long bottom board back rail along the **back side of the hive bottom board** using the 1.25 screws.



picture 7



picture 8



picture 9

Now place the 4 short side bottom board rails on the hive bottom as shown in picture using the 1.25 screws

The smooth outside of the window cut out can be seen in picture #9



Now place hive with bottom side down. Secure front entrance landing board to outside of hive front with three 1.75 screws as seen in picture 10. Place wood glue on contact part of landing board.

***Be sure to insert screw straight.**

Go slow and ensure the screw does not break out of the landing board!



picture 10



picture 11

Screen Bottom Installation - Unroll the screen over the inside bottom of the hive.

Center the screen on the bottom board both length wise and side to side.

Using a staple gun, secure one end of screen to hive bottom board.

Being sure to keep the screen straight and level while you finish stapling the screen to the hive bottom board.

Use a small hammer to finish driving in the staples (tack hammer works well).

*** I would suggest waiting to install the screen bottom until after you finish staining/painting your hive to keep it off of the screen.**

ROOF ASSEMBLY

*** BE SURE YOU ARE AWARE THAT THE REAR OF THE GABLE HAS THE 2 HINGE HOLES NEAR THE END!**

See picture #12. As this is VERY important!

The holes are for the roof hinge bolts.

(Do not install hinge as this is a later step)

Attached end lug on gable goes on the inside of roof assembly.



You can see the wider back fascia board showing below the gable. Also note the 2 hinge holes in the gable.



picture 12

*** BE SURE YOU ARE AWARE THE BACK FACIA BOARD IS THE WIDER OF THE 2 BOARDS!**

This is very important! If the back board is placed on the front, the hive will not open properly.



picture 13

*** BE SURE TO GLUE ALL JOINTS IN THE ROOF ASSEMBLY!**

Secure back facia board to the inside/rear of the gable.

BE SURE TO USE WIDE FACIA and the REAR of the Gable (2 holes near end). With the lug on the inside.

Make sure the top outside corner of facia is flush with top edge of gable and secure with wood glue and two 1.75 screws

***Be sure to insert screw straight. Go slow and ensure the screw does not break out the side of the facia board!**



picture 13

Use wide facia board



picture 14

Be sure to attach to rear of gable



picture 15

Repeat the same process with the front facia board.

Repeat the same process with the second gable end.

Now it's time to set the rafters.

Place roof upside down on a flat surface see picture #16.



picture 16

The process is the same for the rafters as it is with the facia. Place glue on the ends of one of the rafters and secure it to the gable with the 1.75 screw through the pre drilled holes.

Be sure to place the screw in the center of the rafter and be sure the rafter is flush with the top of the gable, to ensure the roof fits properly.

By placing the roof assembly upside down on a flat surface it makes placement of the rafters a lot easier.



AGAIN, BE SURE TO INSERT THE SCREW IN straight AND GO SLOW SO THE SCREW DOES NOT COME OUT THE SIDE OF THE RAFTER.

Repeat the process with the remaining 3 rafters.

Now attach the rafters to the other gable.

METAL ROOF INSTALLATION

*** CAUTION! METAL EDGES ARE SHARP.**

*** USE CARE WHEN UNROLLING METAL ROOF.**

*** IT WILL WANT TO UNCOIL LIKE A SPRING.**

Lay metal roof on flat surface. Using a tape measure mark the middle of both ends with a pencil.

picture 17



Lay roof assembly upright on flat surface.

Align the center marks on the roof up with the peaks of the gables.

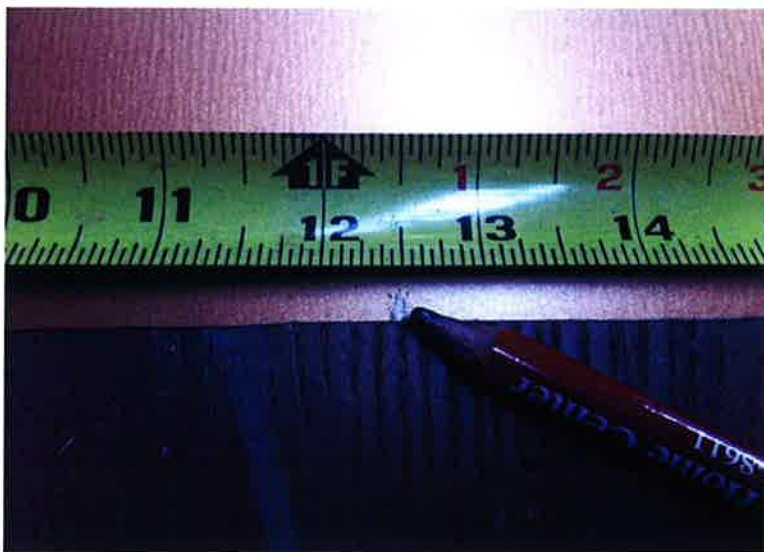
Place metal roof on rafters with one end overhanging the roof assembly by an inch or so to expose the rafters on the other end as seen in picture #17 .

Again using a pencil, mark the roof at the center of each rafter as shown in picture #17 .

Now repeat the above process with the opposite end of the roof.

Now remove the metal roof from the roof assembly and place it on a flat surface.

Measure the middle of both ends of the roof (12.5 inches) and mark it with a pencil as seen in picture 18.



picture 18



picture 19

*** Be sure to get roof properly aligned.**

An extra set of hands is very helpful during this process.

Now place the roof on the roof assembly. Place center marks at peak of gable on both ends (picture 19). Make sure the roof overhangs the roof assembly the same distance on both ends.

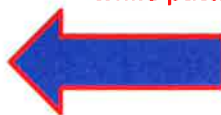


picture 20



picture 21

Be very careful not to scratch the roof while putting the screws in.



Now insert a roof screw in the hole farthes to the right in the top rafter nearest to you as seen in picture # 21. Do not over tighten the screw. Just seat it to where the gasket starts to compress.

Now go to the opposite end of the roof and place a screw in thefar left hole in the same rafter.

Now go to the center mark in the same rafter and place a screw.

Now do the 2 remaining screws in the same rafter.

Next push the roof down on the roof assembly to the bottom rafter on the same side and secure it with a screws

Now turn the roof assembly around.

Press the roof down on the roof assembly.

Start with the middle screw in the to rafter and then work your way out to both ends.

Be sure to push the roof down while putting in the screws.

Roof Hinge Assembly

Turn the roof assembly over on a flat surface. (You may want to put down a towel or something similar. to prevent scratching the paint on your roof.)

Place the aluminum hinge strap on the inside of the gable as seen in picture #22.

Using 2 bolts (hinge bolt bag) place bolts through the holes in the outside of the gable and through the two holes in the hinge strap on the inside of the gable.

Push the end of the hinge down towards the back board and tighten bolts.

Tighten to the point the head of the bolt just starts to sink in to the outside of the gable end.

Repeat the hinge installation with the other hinge strap.

picture 22



Do not put a washer on the hinge. There is a close tolerance between the nut and the hive body end board.

The nut will be hard to start on the bolt. The bolt does not stick through very much.

Set the hive in the direction you want the entrance to be on when you open the roof assembly.

Now place the roof assembly on top of the hive body.

*** Place hinge side of roof to the backside of the hive body.**

Turn the hive around so the hinge side is nearest you.

Be sure the hive body is centered end to end under the roof assembly and the roof assembly lugs are resting on top of the hive ends.

*** Now push the roof assembly as far forward as it will go.**

The rear fascia board will be resting on the back side of the hive end board.

Now with the hinge straps (not over tightened) maneuver them to get the hole centered between the back edge of the hive end board and the back of the hive body back board. .

Adjust both hinge straps so the bolt hole is at the same location on both ends.

picture 23



Now using a .25 inch drill bit, drill a hole in the hive end boards, by drilling through the hole in the hinge strap.

See picture # 23 .

Place bolt through the hinge strap and then through the hive body end. Place on a washer and a nut.

Do not over tighten the nut. Just snug it up.

Repeat bolt installation with second hinge.

Now tighten the four nuts on the hinge at the gable to the point where the bolt head starts to compress in the wood..

Leg Attachment

Place the hive on a flat surface and leave one end of the hive hang over the edge as shown in picture # 26 .

Take one of the leg bolts and place it through the top hole in the leg.

Now take a leg and a bolt and push the bolt through the top bolt hole in the hive body end board.

*** be sure the top of the leg is flat as shown in picture # 24**

*** Gable end of roof assembly will come to rest on the top of the legs**

Now maneuver the leg so you can insert the 2nd leg bolt through the leg and through the hive body end board. Place a washer and nut on each bolt.

Tighten the nut until you see the head of the bolt start to pull in to the surface of the leg.

Repeat with the 2nd leg on the same end of the hive.

Now do the same with the legs on the other end of the hive body.

picture 24



*** I would suggest waiting to install the legs until after you finish staining/painting the hive body. This will allow you finish the leg.**

Window Shutter Installation



picture 25



picture 26

In picture 26 the bottom
is the board with the hole

not the window



The hive is on it's back side
The window is under the shutter

Now with your window shutter, place the piano hinges centers 4 inches from each end of the shutter.

Screw the hinge on the edge of the shutter board as shown in picture # 25

Now center the shutter board on the window opening from front to back.

The hinges should go down when the shutter board is placed on the hive.

The shutter board should be level with the hive. This is done by measuring from the top edge of the hive body side board to the top edge of the shutter board.

Both measurements should be the same. Secure the hinges with the screws provided.

The bottom of the hinge should touch the bottom board as seen in pictures # 25 & 26.

*** The screws for the hinges are small, so do not over tighten them.**



picture 27



picture 28

Now place the small pyramid shaped latch mount on the hive body side board (picture 27). just above the center of the window shutter board. This should be glued to the side board. Now take the 2 inch screw and put it through the hole provided in the shutter latch board. The screw will not tighten up in the latch board. Now take the screw and place it through the hole in the latch mount board and secure it to the hive body side board. Do not over tighten the screw, only snug it down. Do not manipulate the latch board until the glue is dry and the mount is secure.

Wait until you stain/paint your hive to install window pane.

Use a waterproof silicone to glue the window in the groove around the window opening.

Now is the time to let your hive set overnight to let the glue set up before you stain or paint the exterior of your hive. DO NOT PAINT OR STAIN THE INSIDE OR YOUR HIVE!!!!!!!!!!

If you stain your hive you will need to protect it with linseed oil or a similar product.

ENJOY YOUR HIVE AND REMEMBER TO BEE FRIENDLY!

Thank you again for choosing us to give your bees the very best home.

SUPERIOR BEE SUPPLY

P.O. BOX 74

WORTHINGTON, IN. 47471

gregg@superiorbeesupply.com

888-979-5625



We take the sting out of low quality and higher prices !

